

ISSUED FOR REVIEW

DRAWING DATA

PROJECT: CAESARS SPORTSBOOK
ADDRESS: 175 OCEANPORT AVENUE
OCEANPORT NJ 07757

SHEET SUBMISSION INDEX
• ISSUED FOR PERMIT - 10.27.2023

REV NO. REVISION DATE

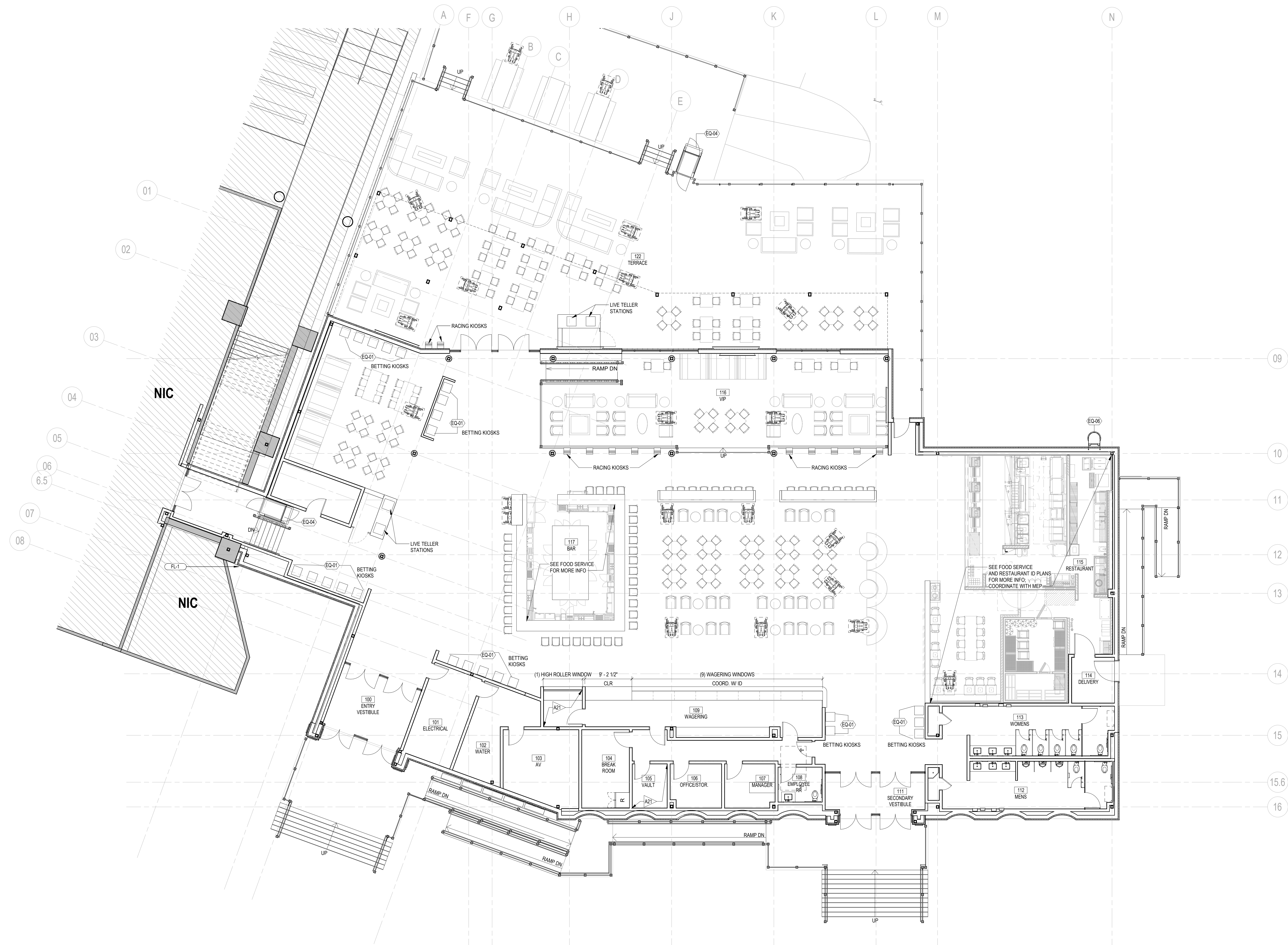
SEAL & SIGNATURE:

SHEET TITLE: LEVEL 1 - FURNITURE & EQUIPMENT PLAN

PROJECT NO: 2021.165

SCALE: As indicated

A111



1 LEVEL 01 - FURNITURE & EQUIPMENT PLAN
1/8" = 1'-0"

EQUIPMENT SCHEDULE

TYPE MARK	DESCRIPTION	VENDOR	ITEM NUMBER/COLOR/SIZE	COMMENTS
EQ-01	WAGERING KIOSKS	BY OWNER		OWNER PROVIDED VENDOR
EQ-02	HORSE RACING KIOSKS	BY OWNER		OWNER PROVIDED VENDOR
EQ-02A	HORSE RACING MACHINES - PARIMUTUEL	BY OWNER		
EQ-03	OVERHEAD SUPPORT CANOPY	MITCHELL METALS	2"X2" TUBE - BLACK POWDER COAT	INSTALL PER MFRS REQUIREMENTS AND STANDARD DETAILS
EQ-04	CHAIR LIFT	HERCULES	VERTICAL PLATFORM LIFT #1606	
EQ-05	MECHANICAL SCREEN	KINGSPAN	INTEGRITY XC-12; COLOR: SANDSTONE	VIF AND COORDINATE SIZES WITH SCHEDULED ROOF TOP EQUIPMENT
EQ-06	ROOF LADDER	ALACO	561-C	
EQ-07	GAS HEATER	BROMIC	TUNGSTEN - BH0210004-1	PROVIDE WALL / CEILING MOUNT & HEAT DEFLECTOR. COORD. W/ PLANS
EQ-08	CEILING FAN - LOW PROFILE MOUNT	BIG ASS FANS	HAIKU - 60" - LOW PROFILE MOUNT	AIRFOIL + HARDWARE FINISH: OIL-RUBBED BRONZE

KEY NOTES - FLOOR PLANS

- A1 FURNISH & INSTALL MILLWORK; COORD. W/ DETAILS & SEE ID DRAWINGS FOR MORE INFORMATION
- A2 PROVIDE CONTINUOUS WATERPROOFING MEMBRANE BELOW SCHEDULED FLOORING; TYP FOR ALL BATHROOM AND BAR AREAS
- A3 7" MAXIMUM VERTICAL RISE FROM FINISH FLOOR AT MAIN LEVEL TO FINISH FLOOR AT RAISED VIP AREA, VIF
- A4 FURNISH & INSTALL FRAMED PLEXI GLASS AT HIGH ROLLER WINDOW; SEE ELEVATIONS AND DETAILS
- A5 ROOF TOP EQUIPMENT; SEE MECHANICAL
- A6 STONE PAVEMENT WALKWAY FOR EQUIPMENT ACCESS
- A7 ROOF TOP ACCESS LADDER W/ PROTECTIVE CASE
- A8 ACCESSIBLE LIFT; SEE DETAILS, COORDINATE W/ STRUCTURAL & ELECTRICAL
- A10 PREMANUFACTURED ALUMINUM CANOPY SYSTEM; BASIS OF DESIGN: MFR: MITCHELL METALS, MODEL: LONGWAY WALKWAY CANOPY; NOTE: ALL ENGINEERING TO BE BY SYSTEM MFR AND COORDINATED W/ GC AND SECC
- A11 METAL COPING OVER BUILT-UP EIFS CORNICE; TYPICAL AT ROOF PERIMETER; SEE DETAILS

KEY NOTES - FLOOR PLANS

- A12 MOUNT FANS TO UNDERSIDE OF BEAM AT CANOPY; TYP.
- A13 SUSPENDED CEILING PRODUCT; SEE ID DRAWINGS; COORDINATE W/ TRACK LIGHTING AS REQUIRED
- A14 SEE AV DRAWINGS FOR ADDITIONAL INFORMATION REGARDING POWER/DATA REQUIREMENTS FOR AV SCOPE
- A15 COORDINATE MILLWORK POWER REQUIREMENTS AND DIMENSIONS W/ ID DRAWINGS
- A16 HOSE BIB; COORD. W/ PLUMBING
- A17 CANOPY TO BE ATTACHED TO EXTERIOR WALL PER MANUFACTURER'S REQUIREMENTS; SEE DETAILS AND COORDINATE W/ FINAL PRODUCT
- A18 FURNISH & INSTALL CONTINUOUS ROOF OVER CAVITY BETWEEN EXISTING STAIR WALL AND NEW BUILDING; SEE DETAILS
- A19 ROOF DRAIN; COORD. W/ PLUMBING
- A20 ACCESSIBLE COUNTERTOP; COORD. W/ ID DRAWINGS
- A21 PROVIDE 20 GA STUDS W/ 20 GA SHEET METAL PANELS CONTINUOUSLY BEHIND FINISHES AT HIGH ROLLER ENCLOSURE
- A22 PROVIDE 20 GA PERFORATED METAL GRID ABOVE FINISHED CEILING PLANE; MECHANICALLY FASTEN TO FRAMING; SEE DETAILS
- A23 PROVIDE 20 AMP DEDICATED CIRCUITS FOR EACH KIOSK; COORDINATE W/ MEP AND OWNER
- A24 FURNISH & INSTALL ADA DOOR ACTUATOR PUSH PLATE; SEE DOOR HARDWARE SCHEDULE; ACTUATOR TO CONTROL RIGHT LEAF OF DOUBLE DOOR ONLY
- A25 12W" X 48" L X 36" H EXTERIOR PLANTERS TO PROVIDED BY OWNER; COORDINATE W/ OWNERSHIP
- A26 PARTIAL HEIGHT ENCLOSURE AT KIOSKS; PROVIDE 3 5/8" METAL FRAMING W/ 5/8" GYPSUM BOARD BOTH SIDES; PROVIDE GYPSUM BOARD SOFFIT ABOVE; COORD. W/ ELEVATIONS AND RCP

GENERAL NOTES

- A REFER TO PLAN CALLOUT SHEETS FOR ENLARGED DETAILS.
- B REFER TO SHEETS A004-A006 FOR ACCESSIBILITY STANDARD MOUNTING HEIGHTS, CLEARANCES AND REQUIREMENTS
- C GO TO VERIFY ALL DIMENSIONS IN FIELD.
- D THE CONTRACTOR SHALL VERIFY THE EXACT LOCATION OF EACH DEVICE/OBJECT DIMENSIONED IN THE DRAWINGS PRIOR TO INSTALLATION/CONSTRUCTION
- E REFER TO PLUMBING FIXTURE AND ACCESSORY SCHEDULE AND INSTALL PER MFR INSTALLATION INSTRUCTIONS.
- F REFER TO DOOR AND WINDOW SCHEDULE FOR TAGS/DETAILS AND ADDITIONAL INFORMATION. GO TO ALIGN FINISHES WHERE DISSIMILAR WALL TYPES MEET.
- G ALL ACOUSTICAL GRID AND CEILING TILE IS TO BE CENTERED IN AREA SHOWN, UNLESS NOTED OTHERWISE.
- H REFER TO MEP DRAWINGS FOR ALL LIFE SAFETY AND MECHANICAL DEVICE LOCATIONS.
- I REFER TO A400 SERIES FOR ENLARGED PLANS AND DIMENSIONS.
- J REFER TO FINISH SCHEDULE FOR MATERIAL SPECIFICATIONS. INSTALL PER MFR RECOMMENDATIONS.
- L REFER TO INTERIOR DESIGN DRAWINGS FOR ADDITIONAL FINISH INFORMATION AS TAGGED AND SCHEDULED.
- M FURNITURE SHOWN FOR REFERENCE ONLY; SEE INTERIOR DESIGN DRAWINGS FOR MORE INFORMATION.
- N PAINT ALL GRILLES AND VENT COVERS TO MATCH ADJACENT WALL COLOR. USE DTM PAINT AS REQUIRED.
- O ALL FLOORS TO BE LEVEL PRIOR TO FLOOR FINISH APPLICATION.
- P POWER SHOWN FOR REFERENCE ONLY. REFER TO MEP, AV AND ID DRAWINGS FOR ADDITIONAL INFORMATION AND RECEPTACLES REQUIRED.
- Q COORDINATE POWER/DATA REQUIREMENTS FOR ALL BETTING MACHINES W/ OWNER NOTED OTHERWISE. REFERENCE DOOR SCHEDULE FOR DOOR DIMENSIONS AND SPECIFICATIONS.
- S INSTALL FLOORING, ASSOCIATED UNDERLAYMENT, AND WALL BASE AS SCHEDULED. REFER TO FINISH SCHEDULE AND ID FINISH SCHEDULE FOR DETAILS AND PRODUCT INFORMATION.
- T INTERIOR WALL DIMENSIONS ARE FROM FINISH FACE U.N.O.
- U EXTERIOR DIMENSIONS ARE FROM FACE OF EXTERIOR WALL TO GRID LINE. U.N.O.
- V ROOF SLOPE IS 1/4" PER 12" MINIMUM. U.N.O.
- W ALL OUTLETS TO BE MOUNTED AT 18" AFF. U.N.O. COORDINATE W/ AV AND INTERIOR DESIGN DRAWINGS
- X ALL PARTITION TYPES TO BE 06 U.N.O.
- Y GO TO PROVIDE EMPTY CONDUIT TO EXTENTS OF NEW BUILDING FOR LOW VOLTAGE RUNS AS FOLLOWS:
a. QUANTITY (2) 2" FROM AV ROOM TO EXISTING BUILDING (TV)
b. QUANTITY (2) 2" FROM AV TO EXISTING BUILDING (ID/FIRST AID)
c. QUANTITY (1) 2" FROM FCP EXISTING BUILDING (SURVEILLANCE)
d. QUANTITY (1) 2" FROM ELECTRICAL ROOM TO EXISTING BUILDING (AV)
e. QUANTITY (1) 2" PATIO TERRACE MUTEL RACING TO EXISTING BUILDING (AV)
f. QUANTITY (1) 2" FROM AV ROOM TO EXISTING BUILDING (TOTE ROOM)
g. QUANTITY (1) 1/2" FROM VAULT TO AV ROOM
Z COORDINATE MANTANCE ANCHORS WITH STRUCTURAL ENGINEER, OPERATOR TO ADVISE ON LOCATIONS OF ANCHORS.