

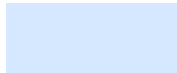
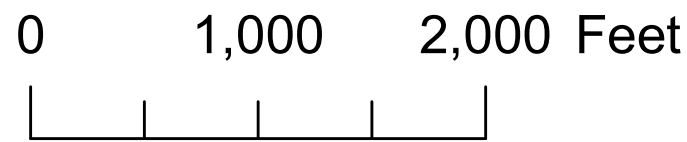
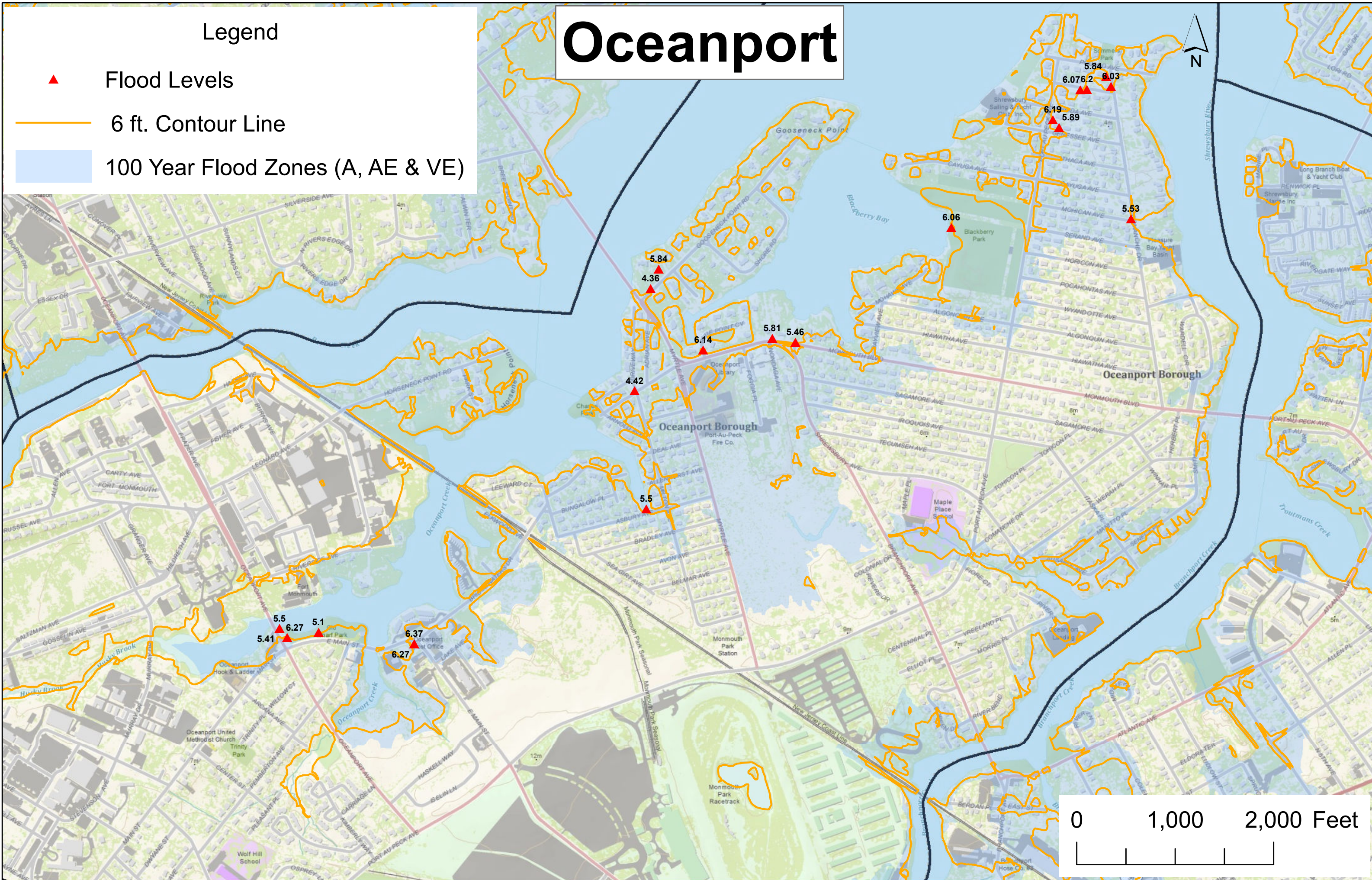


# Oceanport

## Legend

-  Flood Levels
-  6 ft. Contour Line
-  100 Year Flood Zones (A, AE & VE)

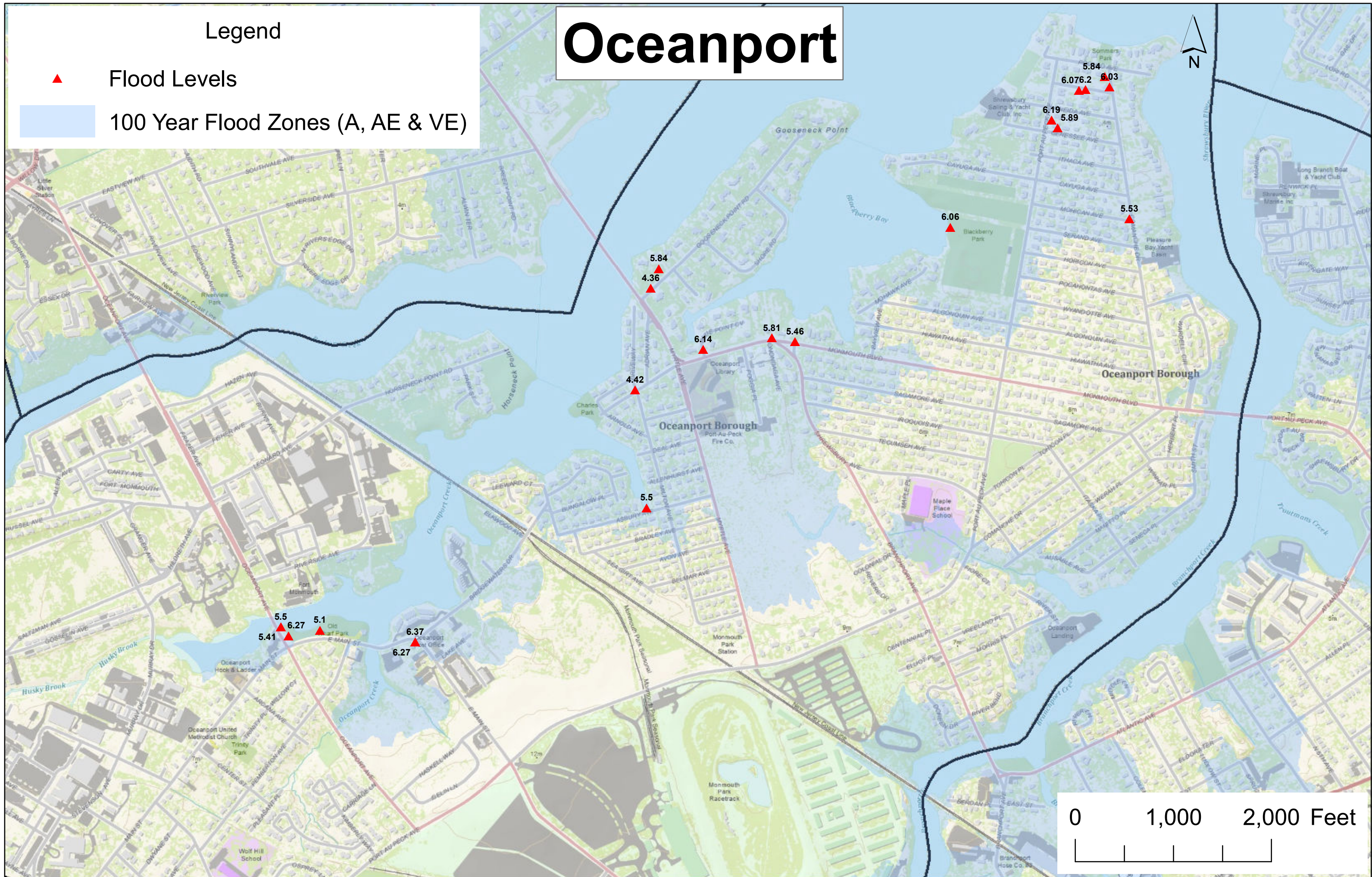


# Legend

# Oceanport

▲ Flood Levels

100 Year Flood Zones (A, AE & VE)



0 1,000 2,000 Feet

Shrewsbury River Flood Warning System  
Sandy Values

DataWise Tabular Report: Monmouth Tide Monitoring

Group Name    Date    Time  
Water Level 01/21/13 12:24:42

Sensor#	Water Level				
	1943	1953	1963	1973	1983
Date	Gooseneck Pt	Patten Ave	Oceanic	Rumson SeaBright	Highlands
10/27/12 11:15	2	1.44	1.38	0.83	-0.18
10/27/12 11:30	1.92	1.24	1.18	0.61	-0.32
10/27/12 11:45	1.68	1.14	0.94	0.51	-0.32
10/27/12 12:00	1.54	0.96	0.76	0.31	-0.54
10/27/12 12:15	1.36	0.82	0.6	0.07	-0.7
10/27/12 12:30	1.24	0.64	0.3	0.07	-0.86
10/27/12 12:45	1.04	0.48	0.26	-0.17	-0.84
10/27/12 13:00	0.96	0.4	0.2	-0.49	-0.82
10/27/12 13:15	0.82	0.22	-0.06	-0.57	-0.84
10/27/12 13:30	0.7	0.16	-0.26	-0.71	-0.76
10/27/12 13:45	0.48	0.04	-0.36	-0.83	-0.6
10/27/12 14:00	0.38	-0.12	-0.48	-0.95	-0.14
10/27/12 14:15	0.28	-0.22	-0.68	-1.01	0.08
10/27/12 14:30	0.18	-0.24	-0.72	-1.05	0.24
10/27/12 14:45	0.02	-0.34	-0.7	-1.13	0.5
10/27/12 15:00	-0.14	-0.2	-0.74	-0.97	0.68
10/27/12 15:15	-0.12	-0.22	-0.74	-0.91	0.92
10/27/12 15:30	-0.3	-0.24	-0.62	-0.71	1.14
10/27/12 15:45	-0.22	-0.34	-0.44	-0.49	1.54
10/27/12 16:00	-0.24	-0.2	-0.32	-0.37	1.76
10/27/12 16:15	-0.02	-0.12	-0.08	-0.27	2.02
10/27/12 16:30	0.06	-0.02	0.16	-0.05	2.3
10/27/12 16:45	0.22	0.12	0.4	0.21	2.6
10/27/12 17:00	0.36	0.28	0.76	0.43	2.72
10/27/12 17:15	0.56	0.48	0.92	0.61	2.92
10/27/12 17:30	0.72	0.64	1.14	0.85	3.12
10/27/12 17:45	0.88	0.9	1.42	1.03	3.22
10/27/12 18:00	1.12	0.98	1.66	1.23	3.42
10/27/12 18:15	1.28	1.24	1.92	1.37	3.48
10/27/12 18:30	1.5	1.38	2.24	1.57	3.56
10/27/12 18:45	1.7	1.64	2.54	1.81	3.62
10/27/12 19:00	1.86	1.84	2.72	1.95	3.54
10/27/12 19:15	2.12	2	2.98	2.07	3.64
10/27/12 19:30	2.2	2.22	3.18	2.29	3.5
10/27/12 19:45	2.42	2.4	3.36	2.43	3.4
10/27/12 20:00	2.62	2.6	3.44	2.51	3.18
10/27/12 20:15	2.84	2.78	3.46	2.59	2.88
10/27/12 20:30	2.92	2.88	3.48	2.57	2.62
10/27/12 20:45	2.94	3.04	3.42	2.61	2.4
10/27/12 21:00	3.22	3.2	3.38	2.61	2.14

Shrewsbury River Flood Warning System  
Sandy Values

Date	1943 Gooseneck Pt	1953 Patten Ave	1963 Oceanic	1973 Rumson SeaBright	1983 Highlands
10/27/12 21:15	3.16	3.14	3.14	2.49	1.84
10/27/12 21:30	3.12	3.16	2.88	2.37	1.68
10/27/12 21:45	3.04	3.12	2.78	2.21	1.42
10/27/12 22:00	2.94	3	2.52	2.07	1.2
10/27/12 22:15	2.78	2.84	2.4	1.83	1.06
10/27/12 22:30	2.58	2.72	2.12	1.69	0.76
10/27/12 22:45	2.58	2.6	1.92	1.43	0.52
10/27/12 23:00	2.48	2.38	1.84	1.29	0.38
10/27/12 23:15	2.16	2.24	1.58	1.09	0.24
10/27/12 23:30	2.04	2.08	1.22	0.89	0.16
10/27/12 23:45	1.92	1.98	1.16	0.71	0.02
10/27/12 22:59	1.72	1.8	0.96	0.55	-0.14
10/28/12 0:15	1.84	1.66	0.92	0.45	-0.18
10/28/12 0:30	1.54	1.5	0.56	0.25	-0.2
10/28/12 0:45	1.36	1.32	0.48	0.13	-0.18
10/28/12 1:00	0.86	1.24	0.4	-0.07	-0.14
10/28/12 1:15	0.86	1.24	0.4	-0.07	-0.14
10/28/12 1:30	0.86	1.24	0.4	-0.07	-0.14
10/28/12 1:45	0.86	1.24	0.4	-0.07	-0.14
10/28/12 1:00	0.86	1.24	0.4	-0.07	-0.14
10/28/12 1:15	0.6	1.04	0.24	-0.21	-0.02
10/28/12 1:30	0.5	0.92	0.04	-0.35	0.08
10/28/12 1:45	0.56	0.78	-0.02	-0.45	0.1
10/28/12 2:00	0.26	0.64	-0.02	-0.45	0.4
10/28/12 2:15	0.22	0.48	-0.22	-0.51	0.74
10/28/12 2:30	0.42	0.44	-0.24	-0.51	0.9
10/28/12 2:45	0.12	0.34	-0.16	-0.51	1.26
10/28/12 3:00	0.46	0.28	-0.18	-0.39	1.62
10/28/12 3:15	0.46	0.18	-0.12	-0.21	1.82
10/28/12 3:30	0.84	0.28	0.12	-0.23	2.06
10/28/12 3:45	0.92	0.34	0.38	-0.01	2.3
10/28/12 4:00	1	0.42	0.5	0.27	2.54
10/28/12 4:15	1.1	0.54	0.86	0.51	2.9
10/28/12 4:30	1.36	0.68	1.12	0.75	3.1
10/28/12 4:45	1.62	0.96	1.36	0.95	3.38
10/28/12 5:00	1.76	1.04	1.6	1.17	3.6
10/28/12 5:15	1.86	1.22	1.92	1.37	3.7
10/28/12 5:30	2.32	1.42	2.2	1.63	3.92
10/28/12 5:45	2.32	1.64	2.56	1.81	4.08
10/28/12 6:00	2.82	1.88	2.86	2.01	4.16
10/28/12 6:15	2.82	2.1	3	2.27	4.38
10/28/12 6:30	2.86	2.34	3.28	2.49	4.52
10/28/12 6:45	3.18	2.52	3.66	2.61	4.66
10/28/12 7:00	3.38	2.76	3.86	2.83	4.7
10/28/12 7:15	3.72	2.9	4.06	2.97	4.72

Shrewsbury River Flood Warning System  
Sandy Values

Date	1943 Gooseneck Pt	1953 Patten Ave	1963 Oceanic	1973 Rumson SeaBright	1983 Highlands
10/28/12 7:30	3.86	3.14	4.24	3.15	4.76
10/28/12 7:45	3.98	3.36	4.3	3.35	4.7
10/28/12 8:00	4.3	3.46	4.4	3.59	4.38
10/28/12 8:15	4.24	3.74	4.48	3.65	4.42
10/28/12 8:30	4.4	3.98	4.58	3.61	4.14
10/28/12 8:45	4.5	4.06	4.54	3.79	3.9
10/28/12 9:00	4.26	4.26	4.5	3.79	3.92
10/28/12 9:15	4.32	4.3	4.42	3.79	3.48
10/28/12 9:30	4.42	4.36	4.3	3.69	3.22
10/28/12 9:45	4.2	4.42	4.3	3.77	3.08
10/28/12 10:00	3.98	4.42	4.08	3.61	2.94
10/28/12 10:15	4.06	4.28	3.82	3.53	2.5
10/28/12 10:30	3.78	4.18	3.78	3.33	2.28
10/28/12 10:45	3.52	4.06	3.42	3.03	2.08
10/28/12 11:00	3.44	3.86	3.26	2.91	2.02
10/28/12 11:15	3.42	3.84	3.14	2.61	1.74
10/28/12 11:30	3.02	3.58	2.86	2.43	1.62
10/28/12 11:45	2.82	3.48	2.64	2.15	1.22
10/28/12 12:00	2.74	3.32	2.6	2.05	1.36
10/28/12 12:15	2.42	2.7	2.6	1.91	1.14
10/28/12 12:30	2.6	2.5	2.6	1.91	1
10/28/12 12:45	2.58	2.78	1.68	1.31	0.52
10/28/12 13:00	2.38	2.7	1.82	1.27	0.62
10/28/12 13:15	2.08	2.5	1.5	1.25	0.62
10/28/12 13:30	1.9	1.86	1.4	1.03	0.66
10/28/12 13:45	1.88	2.12	1.24	0.73	0.72
10/28/12 14:00	1.54	2	1.2	0.65	0.68
10/28/12 14:15	1.48	1.86	0.9	0.57	1.2
10/28/12 14:30	1.08	1.7	0.74	0.45	1.18
10/28/12 14:45	1.16	1.58	0.84	0.33	1.46
10/28/12 15:00	1	1.42	0.64	0.37	1.62
10/28/12 15:15	1.32	1.3	0.56	0.35	1.76
10/28/12 15:30	1.28	1.22	0.68	0.47	1.94
10/28/12 15:45	1.26	1.14	0.86	0.59	2.4
10/28/12 16:00	1.34	1.14	0.96	0.65	2.46
10/28/12 16:15	1.5	1.56	0.98	0.99	2.88
10/28/12 16:30	1.62	1.28	1.28	0.85	3.06
10/28/12 16:45	1.82	1.4	1.62	1.15	3.32
10/28/12 17:00	2.18	1.56	1.8	1.41	3.6
10/28/12 17:15	2.26	1.72	2.04	1.65	3.88
10/28/12 17:30	2.62	1.92	2.38	1.75	4.28
10/28/12 17:45	2.6	2.14	2.6	1.97	4.26
10/28/12 18:00	2.76	2.16	3.06	2.25	4.6
10/28/12 18:15	3.26	2.44	3.3	2.39	4.62
10/28/12 18:30	3.64	2.62	3.56	2.67	4.96

Shrewsbury River Flood Warning System  
Sandy Values

Date	1943 Gooseneck Pt	1953 Patten Ave	1963 Oceanic	1973 Rumson SeaBright	1983 Highlands
10/28/12 18:45	3.3	2.82	3.84	2.85	5.16
10/28/12 19:00	3.9	3.04	3.84	3.09	5.24
10/28/12 19:15	3.26	3.28	4.3	3.23	5.14
10/28/12 19:30	3.64	3.5	4.54	3.53	5.44
10/28/12 19:45	3.3	3.84	4.66	3.89	5.56
10/28/12 20:00	3.9	3.92	4.7	4.39	5.3
10/28/12 20:15	3.92	4.16	5.12	4.49	5.18
10/28/12 20:30	4.5	4.38	5.36	4.23	5.06
10/28/12 20:45	4.4	4.58	5.08	4.41	5.02
10/28/12 21:00	4.54	4.82	5.22	4.35	4.88
10/28/12 21:15	4.98	5	5.48	4.17	4.58
10/28/12 21:30	4.8	5.02	5.2	4.39	4.38
10/28/12 21:45	5.1	5.08	4.94	3.97	3.88
10/28/12 22:00	5.14	4.98	5.14	3.43	3.38
10/28/12 22:15	5.24	4.86	4.84	3.49	3.34
10/28/12 22:30	5.3	4.76	4.6	3.47	3.24
10/28/12 22:45	5.2	4.54	4.4	3.15	3.18
10/28/12 23:00	4.66	4.46	3.98	3.01	2.8
10/28/12 23:15	4.64	4.22	3.92	2.85	3
10/28/12 23:30	4.56	4.02	3.56	2.75	2.36
10/28/12 23:45	4.66	3.88	3.4	2.45	2.38
10/28/12 23:59	4.74	3.76	3.16	2.25	2.2
10/29/12 0:15	4.3	3.6	3.28	2.17	2.16
10/29/12 0:30	3.88	3.48	3.04	2.75	1.92
10/29/12 0:45	3.78	3.2	2.64	2.45	1.9
10/29/12 1:00	3.7	3.14	2.66	2.25	1.88
10/29/12 1:15	3.4	2.94	2.54	2.17	1.24
10/29/12 1:30	3.42	2.8	2.36	1.87	1.56
10/29/12 1:45	3.3	2.64	2.1	1.65	1.84
10/29/12 2:00	3.2	2.46	2.06	1.49	1.66
10/29/12 2:15	2.88	2.36	1.82	1.35	1.96
10/29/12 2:30	2.9	2.24	1.7	1.43	1.6
10/29/12 2:45	2.34	2.14	1.6	1.33	1.84
10/29/12 3:00	2.46	2.04	1.38	1.41	2.5
10/29/12 3:15	2.5	1.98	1.7	1.23	2.84
10/29/12 3:30	2.18	1.98	1.48	1.19	2.76
10/29/12 3:45	2.18	2	1.68	1.79	2.9
10/29/12 4:00	2	2.12	1.68	2.03	3.16
10/29/12 4:15	2.3	2.36	1.68	1.79	3.42
10/29/12 4:30	2.46	2.48	1.68	2.11	3.76
10/29/12 4:45	2.64	2.68	1.68	2.51	3.98
10/29/12 5:00	2.3	2.84	2.6	2.77	4.32
10/29/12 5:15	2.96	3.1	2.6	2.99	4.58
10/29/12 5:30	2.88	3.24	2.6	3.33	4.88
10/29/12 5:45	3.36	3.42	2.6	3.39	5.24

Shrewsbury River Flood Warning System  
Sandy Values

Date	1943 Gooseneck Pt	1953 Patten Ave	1963 Oceanic	1973 Rumson SeaBright	1983 Highlands
10/29/12 6:00	3.24	3.68	2.6	3.73	5.38
10/29/12 6:15	2.88	4.04	2.6	4.05	5.92
10/29/12 6:30	4.28	4.36	2.6	4.15	6.02
10/29/12 6:45	4.34	4.36	2.6	4.49	6.18
10/29/12 7:00	4.44	4.8	2.6	4.97	6.48
10/29/12 7:15	4.82	4.96	5.18	5.15	6.34
10/29/12 7:30	4.34	5.26	5.54	4.49	6.78
10/29/12 7:45	4.44	5.36	5.88	4.97	7.12
10/29/12 8:00	4.82	5.84	6.24	5.15	6.92
10/29/12 8:15	5.4	5.7	6.24	5.43	7.14
10/29/12 8:30	5.66	6.08	6.3	5.59	6.84
10/29/12 8:45	5.46	6.24	6.62	5.71	7.02
10/29/12 9:00	6.14	6.42	6.68	5.79	6.94
10/29/12 9:15	5.96	6.62	6.92	5.79	6.56
10/29/12 9:30	6.16	6.74	7.2	5.79	6.56
10/29/12 9:45	6.24	6.74	7.06	5.79	5.94
10/29/12 10:00	6.08	6.78	6.96	5.79	6.02
10/29/12 10:15	6.76	6.82	6.66	5.79	5.82
10/29/12 10:30	6.9	6.72	6.9	5.79	6.02
10/29/12 10:45	6.74	6.68	6.5	5.61	5.54
10/29/12 11:00	6.74	6.58	6.5	5.51	5.08
10/29/12 11:15	6.2	6.46	6.5	5.27	5.14
10/29/12 11:30	6.36	6.3	6.5	4.89	4.62
10/29/12 11:45	5.9	6.2	6.5	4.89	5.14
10/29/12 12:00	6.4	6.18	6.5	4.75	4.68
10/29/12 12:15	6.36	5.96	6.5	4.89	4.64
10/29/12 12:30	5.9	5.82	5.02	4.89	4.32
10/29/12 12:45	6.4	5.82	5.12	4.75	5.14
10/29/12 13:00	5.82	5.58	5.12	4.65	4.12
10/29/12 13:15	5.58	5.4	4.52	4.39	4.18
10/29/12 13:30	5.78	5.4	4.74	4.03	5
10/29/12 13:45	5.52	5.24	4.74	3.75	4.18
10/29/12 14:00	5.6	5.14	4.74	3.75	4.58
10/29/12 14:15	5.24	5.14	4.74	3.59	4.58
10/29/12 14:30	5.16	4.92	4.74	4.25	4.54
10/29/12 14:45	5.6	4.82	4.74	3.75	5.24
10/29/12 15:00	4.92	4.84	4.12	4.57	5.24
10/29/12 15:15	4.88	5.24	4.12	5.21	5.24
10/29/12 15:30	5.38	5.24	4.12	4.53	5.6
10/29/12 15:45	5.56	5.52	4.12	4.99	5.9
10/29/12 16:00	5.88	5.66	4.12	5.21	6.38
10/29/12 16:15	6.38	5.78	4.72	5.47	6.8
10/29/12 16:30	6.1	5.94	4.92	5.67	6.94
10/29/12 16:45	6.72	6.18	4.92	5.79	6.8
10/29/12 17:00	6.46	6.26	4.92	5.79	7.32

Shrewsbury River Flood Warning System  
Sandy Values

Date	1943 Gooseneck Pt	1953 Patten Ave	1963 Oceanic	1973 Rumson SeaBright	1983 Highlands
10/29/12 17:15	7	6.58	4.92	5.79	7.48
10/29/12 17:30	6.64	6.62	4.92	5.79	7.86
10/29/12 17:45	7.14	6.98	6.64	5.79	8.08
10/29/12 18:00	7.28	7.42	6.66	5.79	8.48
10/29/12 18:15	7.62	7.78	7.56	5.79	8.72
10/29/12 18:30	7.92	7.34	7.52	5.79	9.16
10/29/12 18:45	7.94	8.08	8.28	5.79	9.58
10/29/12 19:00	8.12	8.08	7.94	5.79	10.18
10/29/12 19:15	8.8	8.08	8.62	5.79	10.2
10/29/12 19:30	9.04	8.08	8.62	5.79	10.52
10/29/12 19:45	9.16	8.08	8.62	5.79	11.18
10/29/12 20:00	9.54	8.08	8.62	5.79	11.16
10/29/12 20:15	9.76	8.08	8.62	5.79	11.28
10/29/12 20:30	9.88	8.08	8.62	5.79	10.66
10/29/12 20:45	10.2	8.08	8.62	5.79	10.66
10/29/12 21:00	10.12	8.08	10.9	5.79	10.5
10/29/12 21:15	10.22	8.08	10.34	5.79	10.14
10/29/12 21:30	10.26	8.08	11.2	5.79	9.64
10/29/12 21:45	10.18	8.08	9.72	5.79	9.32
10/29/12 22:00	10.02	8.08	9.24	5.79	8.46
10/29/12 22:15	9.72	8.08	8.88	5.79	7.88
10/29/12 22:30	9.82	8.08	8.32	5.79	7.56
10/29/12 22:45	9.48	8.08	8.14	5.79	6.98
10/29/12 23:00	9.36	8.08	7.72	5.79	6.34
10/29/12 23:15	9.2	8.08	7.72	5.79	5.7
10/29/12 23:30	8.9	8.08	7.72	5.79	5.32
10/29/12 23:45	8.7	8.08	7.72	5.79	5
10/29/12 23:59	8.54	8.08	7.72	5.79	4.52
10/30/12 0:15	8.22	8.08	7.72	5.63	4.24
10/30/12 0:30	7.98	8.04	7.72	5.31	3.72
10/30/12 0:45	7.84	7.8	7.72	5.01	3.34
10/30/12 1:00	7.52	7.44	7.72	4.61	3.38
10/30/12 1:15	7.38	7.36	7.72	4.49	3.12
10/30/12 1:30	7.08	7.12	7.72	4.25	2.58
10/30/12 1:45	6.68	6.78	7.72	3.93	2.62
10/30/12 2:00	6.52	6.52	Missing	3.75	2.12
10/30/12 2:15	6.36	6.3	Missing	3.47	2.26
10/30/12 2:30	6.1	6.02	Missing	3.27	2.18
10/30/12 2:45	5.9	5.7	Missing	3.15	2.14
10/30/12 3:00	5.5	5.52	Missing	2.95	2.28
10/30/12 3:15	5.28	5.24	Missing	2.85	2.26
10/30/12 3:30	4.94	4.98	Missing	2.67	2.18
10/30/12 3:45	4.58	4.7	Missing	2.53	2.62
10/30/12 4:00	4.54	4.5	Missing	2.49	2.32
10/30/12 4:15	4.16	4.3	Missing	2.51	2.68



Shrewsbury River Flood Warning System  
Sandy Values

Date	1943 Gooseneck Pt	1953 Patten Ave	1963 Oceanic	1973 Rumson SeaBright	1983 Highlands
10/30/12 4:30	4.1	4.3	Missing	2.51	2.92
10/30/12 4:45	3.86	4.06	Missing	2.55	3.3
10/30/12 5:00	3.72	3.92	Missing	2.67	3.32
10/30/12 5:15	3.52	3.68	Missing	2.89	3.66
10/30/12 5:30	3.5	3.46	Missing	3.13	3.42
10/30/12 5:45	3.36	3.4	Missing	3.11	3.72
10/30/12 6:00	3.34	3.38	Missing	3.29	3.98
10/30/12 6:15	3.52	3.34	Missing	3.15	4.32
10/30/12 6:30	3.58	3.46	Missing	3.49	4.54
10/30/12 6:45	3.74	3.62	Missing	3.67	4.88
10/30/12 7:00	3.88	3.7	Missing	3.85	4.58
10/30/12 7:15	3.98	3.9	Missing	3.75	4.88
10/30/12 7:30	4.18	3.98	Missing	3.87	4.66
10/30/12 7:45	4.32	4.12	Missing	3.97	4.56
10/30/12 8:00	4.32	4.32	Missing	3.97	4.82
10/30/12 8:15	4.48	4.34	Missing	3.93	4.84
10/30/12 8:30	4.54	4.46	Missing	3.99	4.92
10/30/12 8:45	4.56	4.5	Missing	4.13	4.56
10/30/12 9:00	4.62	4.56	Missing	4.25	5.22
10/30/12 9:15	4.7	4.56	Missing	4.03	5.2
10/30/12 9:30	4.7	4.58	Missing	4.03	4.86
10/30/12 9:45	4.48	4.56	Missing	4.05	4.38
10/30/12 10:00	4.54	4.6	Missing	3.79	4.04
10/30/12 10:15	4.34	4.64	Missing	3.73	3.78
10/30/12 10:30	4.28	4.36	Missing	3.27	3.82
10/30/12 10:45	4.28	4.28	Missing	3.39	3.7
10/30/12 11:00	4.14	4.18	Missing	3.25	3.42
10/30/12 11:15	4.06	4.12	Missing	2.93	3.02
10/30/12 11:30	3.9	3.88	Missing	2.71	2.74
10/30/12 11:45	3.8	3.72	Missing	2.47	2.34
10/30/12 12:00	3.58	3.68	Missing	2.21	2.1
10/30/12 12:15	3.4	3.42	Missing	1.97	1.82
10/30/12 12:30	3.32	3.28	Missing	1.79	1.42
10/30/12 12:45	3.14	3.08	Missing	1.49	1.16
10/30/12 13:00	2.9	2.88	Missing	1.27	0.92
10/30/12 13:15	2.76	2.7	Missing	1.03	0.52
10/30/12 13:30	2.52	2.56	Missing	0.83	0.5
10/30/12 13:45	2.38	2.24	Missing	0.61	0.14
10/30/12 14:00	2.02	2.12	Missing	0.41	-0.04
10/30/12 14:15	1.96	2	Missing	0.11	-0.24
10/30/12 14:30	1.76	1.8	Missing	0.01	-0.22
10/30/12 14:45	1.62	1.6	Missing	-0.19	-0.32
10/30/12 15:00	1.42	1.38	Missing	-0.31	-0.36
10/30/12 15:15	1.28	1.26	Missing	-0.41	-0.42
10/30/12 15:30	1.14	1.1	Missing	-0.61	-0.32

Shrewsbury River Flood Warning System  
Sandy Values

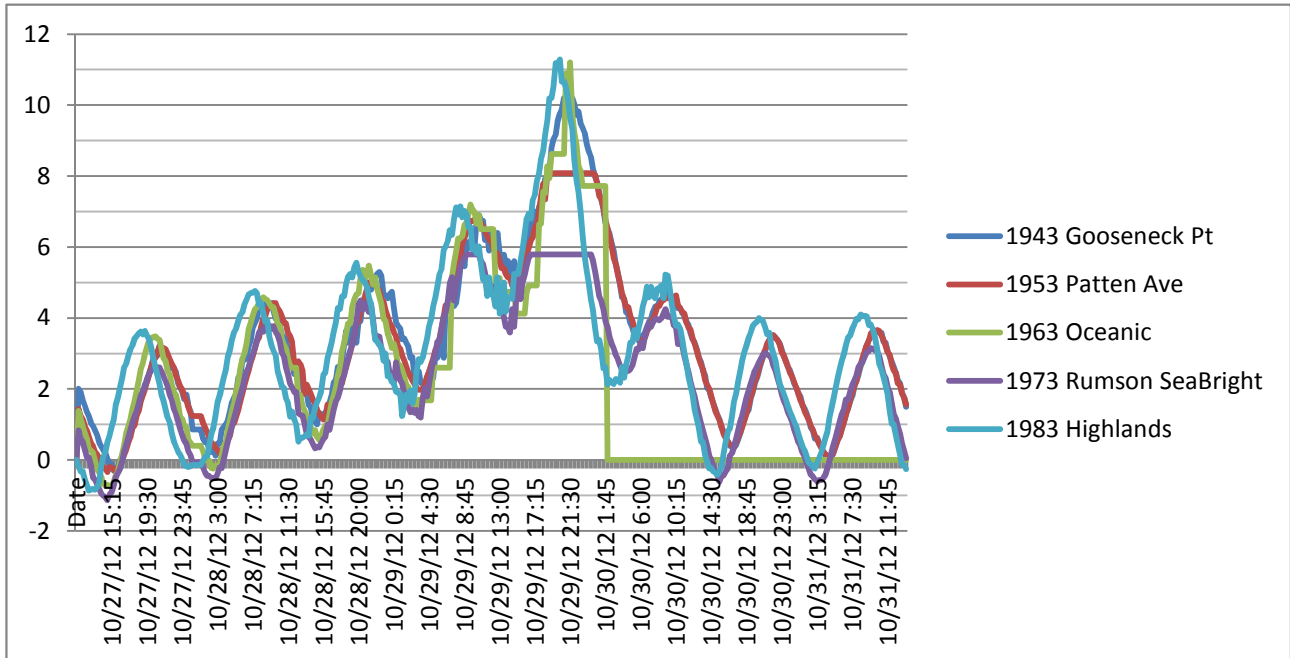
Date	1943 Gooseneck Pt	1953 Patten Ave	1963 Oceanic	1973 Rumson SeaBright	1983 Highlands
10/30/12 15:45	0.92	0.94	Missing	-0.47	-0.2
10/30/12 16:00	0.8	0.72	Missing	-0.43	0.2
10/30/12 16:15	0.62	0.64	Missing	-0.33	0.5
10/30/12 16:30	0.52	0.52	Missing	-0.23	0.8
10/30/12 16:45	0.4	0.44	Missing	0.11	0.88
10/30/12 17:00	0.36	0.38	Missing	0.19	1.24
10/30/12 17:15	0.34	0.36	Missing	0.37	1.64
10/30/12 17:30	0.42	0.48	Missing	0.61	1.88
10/30/12 17:45	0.56	0.62	Missing	0.83	2.2
10/30/12 18:00	0.76	0.78	Missing	1.09	2.52
10/30/12 18:15	0.96	0.94	Missing	1.25	2.82
10/30/12 18:30	1.14	1.14	Missing	1.53	3.06
10/30/12 18:45	1.32	1.32	Missing	1.75	3.22
10/30/12 19:00	1.42	1.54	Missing	1.95	3.44
10/30/12 19:15	1.72	1.76	Missing	2.13	3.58
10/30/12 19:30	1.9	1.98	Missing	2.33	3.78
10/30/12 19:45	2.14	2.2	Missing	2.51	3.84
10/30/12 20:00	2.3	2.36	Missing	2.63	3.9
10/30/12 20:15	2.52	2.6	Missing	2.75	4
10/30/12 20:30	2.74	2.8	Missing	2.87	3.94
10/30/12 20:45	2.92	2.96	Missing	2.97	3.92
10/30/12 21:00	3.08	3.12	Missing	3.01	3.74
10/30/12 21:15	3.22	3.28	Missing	2.97	3.54
10/30/12 21:30	3.36	3.4	Missing	2.93	3.58
10/30/12 21:45	3.48	3.5	Missing	2.87	3.18
10/30/12 22:00	3.48	3.52	Missing	2.65	3
10/30/12 22:15	3.46	3.42	Missing	2.51	2.78
10/30/12 22:30	3.38	3.38	Missing	2.31	2.46
10/30/12 22:45	3.28	3.26	Missing	2.11	2.14
10/30/12 23:00	3.1	3.04	Missing	1.87	2.02
10/30/12 23:15	2.92	2.94	Missing	1.67	1.86
10/30/12 23:30	2.8	2.78	Missing	1.53	1.72
10/30/12 23:45	2.62	2.62	Missing	1.35	1.5
10/30/12 23:59	2.54	2.46	Missing	1.21	1.36
10/31/12 0:15	2.36	2.34	Missing	1.05	1.22
10/31/12 0:30	2.16	2.2	Missing	0.87	1.08
10/31/12 0:45	2.02	2.04	Missing	0.69	0.94
10/31/12 1:00	1.88	1.88	Missing	0.51	0.74
10/31/12 1:15	1.78	1.68	Missing	0.39	0.56
10/31/12 1:30	1.54	1.56	Missing	0.21	0.38
10/31/12 1:45	1.44	1.38	Missing	0.09	0.26
10/31/12 2:00	1.32	1.26	Missing	-0.07	0.1
10/31/12 2:15	1.14	1.12	Missing	-0.25	-0.08
10/31/12 2:30	0.92	0.98	Missing	-0.41	-0.12
10/31/12 2:45	0.82	0.84	Missing	-0.47	-0.2

Shrewsbury River Flood Warning System  
Sandy Values

Date	1943 Gooseneck Pt	1953 Patten Ave	1963 Oceanic	1973 Rumson SeaBright	1983 Highlands
10/31/12 3:00	0.6	0.7	Missing	-0.55	-0.24
10/31/12 3:15	0.62	0.58	Missing	-0.61	-0.08
10/31/12 3:30	0.46	0.46	Missing	-0.57	0.06
10/31/12 3:45	0.36	0.34	Missing	-0.57	0.22
10/31/12 4:00	0.24	0.24	Missing	-0.51	0.4
10/31/12 4:15	0.14	0.16	Missing	-0.41	0.62
10/31/12 4:30	0.12	0.1	Missing	-0.23	0.8
10/31/12 4:45	0.1	0.06	Missing	-0.01	1.22
10/31/12 5:00	0.08	0.08	Missing	0.21	1.46
10/31/12 5:15	0.18	0.22	Missing	0.43	1.72
10/31/12 5:30	0.36	0.4	Missing	0.63	2.04
10/31/12 5:45	0.56	0.54	Missing	0.85	2.3
10/31/12 6:00	0.68	0.68	Missing	1.09	2.58
10/31/12 6:15	0.88	0.88	Missing	1.29	2.8
10/31/12 6:30	1.06	1.08	Missing	1.45	3
10/31/12 6:45	1.28	1.28	Missing	1.71	3.24
10/31/12 7:00	1.44	1.46	Missing	1.71	3.46
10/31/12 7:15	1.64	1.7	Missing	1.91	3.5
10/31/12 7:30	1.8	1.9	Missing	2.11	3.7
10/31/12 7:45	2.06	2.1	Missing	2.25	3.82
10/31/12 8:00	2.26	2.22	Missing	2.39	3.98
10/31/12 8:15	2.42	2.5	Missing	2.61	3.96
10/31/12 8:30	2.64	2.68	Missing	2.71	4.1
10/31/12 8:45	2.78	2.88	Missing	2.75	4.06
10/31/12 9:00	3.04	3.06	Missing	2.91	4.06
10/31/12 9:15	3.22	3.22	Missing	3.03	4.04
10/31/12 9:30	3.38	3.38	Missing	3.07	3.8
10/31/12 9:45	3.46	3.56	Missing	3.15	3.82
10/31/12 10:00	3.6	3.64	Missing	3.13	3.66
10/31/12 10:15	3.6	3.64	Missing	3.09	3.44
10/31/12 10:30	3.64	3.66	Missing	3.05	3.1
10/31/12 10:45	3.58	3.64	Missing	2.93	2.7
10/31/12 11:00	3.58	3.5	Missing	2.65	2.54
10/31/12 11:15	3.34	3.4	Missing	2.43	2.36
10/31/12 11:30	3.3	3.22	Missing	2.31	2.1
10/31/12 11:45	3.06	3.04	Missing	2.07	1.86
10/31/12 12:00	2.9	2.96	Missing	1.91	1.36
10/31/12 12:15	2.78	2.7	Missing	1.61	1.02
10/31/12 12:30	2.62	2.54	Missing	1.31	1
10/31/12 12:45	2.46	2.44	Missing	1.17	0.7
10/31/12 13:00	2.24	2.16	Missing	0.95	0.44
10/31/12 13:15	2.16	2.12	Missing	0.73	0.16
10/31/12 13:30	1.9	1.88	Missing	0.47	-0.12
10/31/12 13:45	1.76	1.74	Missing	0.25	-0.14
10/31/12 14:00	1.5	1.56	Missing	0.05	-0.26

Shrewsbury River Flood Warning System  
Sandy Values

Date	1943 Gooseneck Pt	1953 Patten Ave	1963 Oceanic	1973 Rumson SeaBright	1983 Highlands
<b>Min</b>	<b>-0.3</b>	<b>-0.34</b>	<b>-0.74</b>	<b>-1.13</b>	<b>-0.86</b>
<b>Max</b>	<b>10.26</b>	<b>8.08</b>	<b>11.2</b>	<b>5.79</b>	<b>11.28</b>



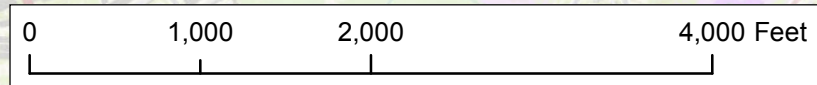
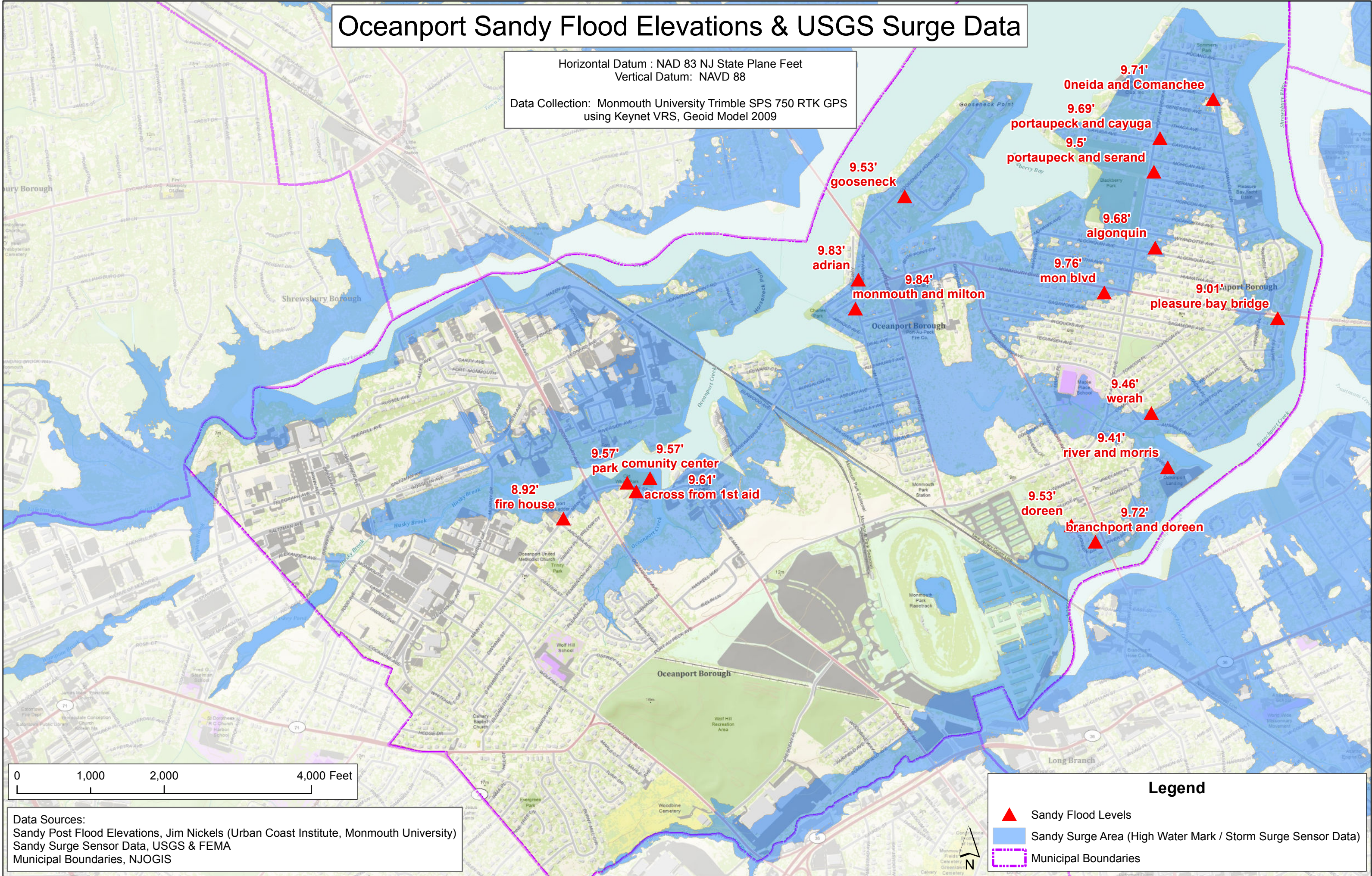
**Notes:** Patten Ave and Rumson Sea Bright Data cut off due to water level higher than gauge could read

Oceanic Missing data from 10/30-11/5 Will add in if available

All readings NAVD 88

# Oceanport Sandy Flood Elevations & USGS Surge Data

Horizontal Datum : NAD 83 NJ State Plane Feet  
 Vertical Datum: NAVD 88  
 Data Collection: Monmouth University Trimble SPS 750 RTK GPS  
 using Keynet VRS, Geoid Model 2009



Data Sources:  
 Sandy Post Flood Elevations, Jim Nickels (Urban Coast Institute, Monmouth University)  
 Sandy Surge Sensor Data, USGS & FEMA  
 Municipal Boundaries, NJOGIS

**Legend**

- ▲ Sandy Flood Levels
- Sandy Surge Area (High Water Mark / Storm Surge Sensor Data)
- Municipal Boundaries

